

# Swivel Davit Crane

## 300 – 500 kg

### Description of the winch

This davit crane is specifically designed to meet the needs of water treatment plants. Unlike other models with integrated winches, the winch is situated on top of the davit. This placement allows for a cable to be securely attached to a pump. Additionally, this davit is compatible with the Pulley Man, which means that lifting heavy loads of up to 300 kg requires no manual effort, making operations significantly easier and more efficient.

### Product specifications

- > robust and safe lifting davit crane in compliance with EN13157
- > ready to use in 5 seconds
- > easy to transport
- > Suitable to use with a manual winch or Pulley Man
- > possible to rotate 360° due to the use of ball bearings
- > zinc plated finish

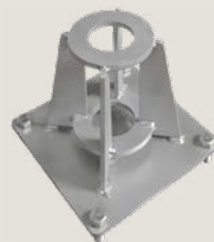


### Options (code)

- ATEX certified zone 2 and 22 (EX)
  - CE II 3G Ex IIC T4 Gc, -20°C<T amb <+70°C
  - CE II 3D Ex IIIC T135°C Dc, -20°C<T amb <+70°C
- custom options possible - [on request](#)

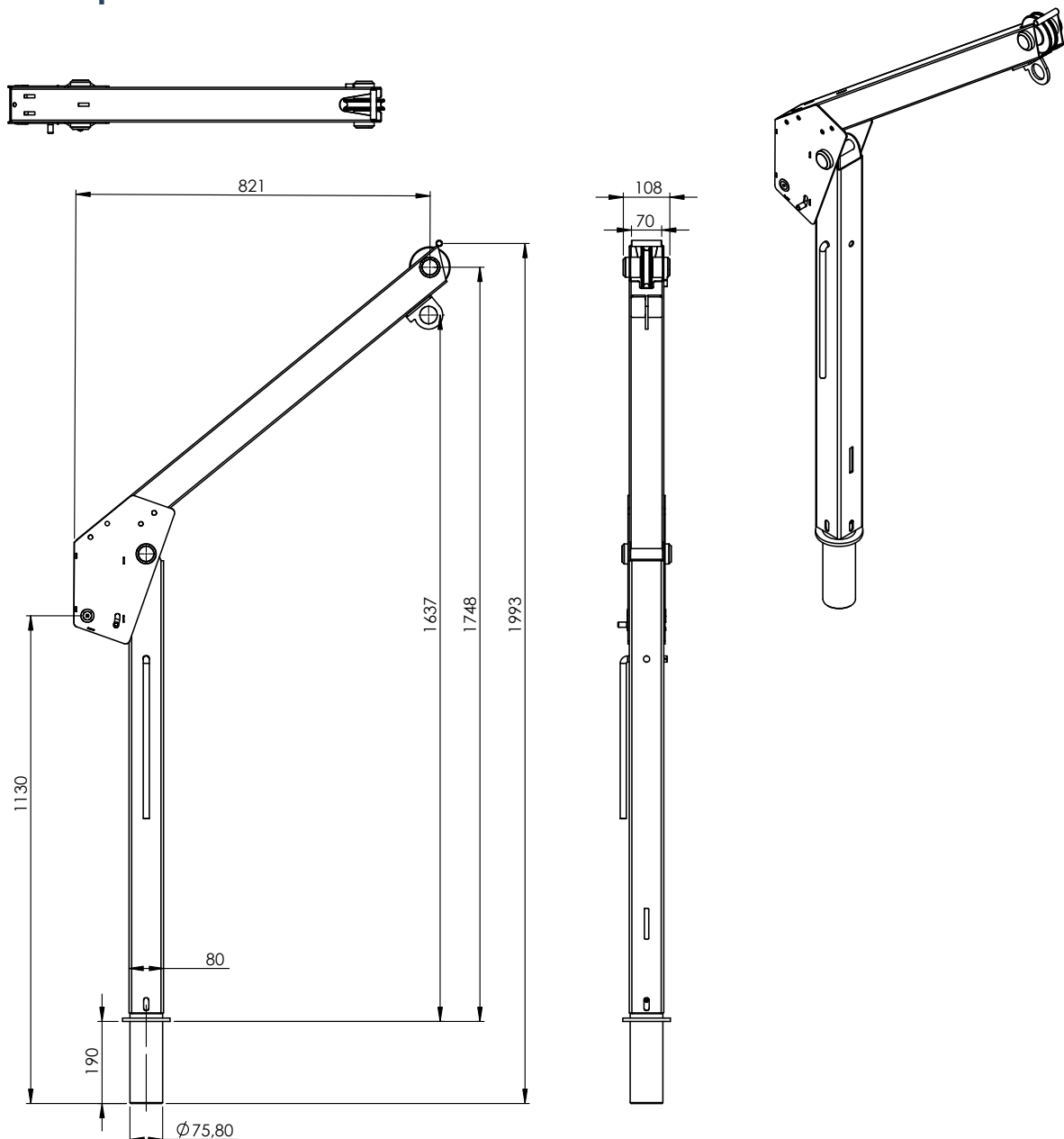
### Accessoires

- floor, wall and in-concrete sockets
- carry bag and protection cover



[Product & instruction video on YouTube](#)

## Technical specifications SD501



Technical specifications	Unit	SD501
Reach	cm	821
Capacity 1st layer - winch	kg	500
Capacity top layer - winch	kg	500
Capacity 1st layer - PM300	kg	300
Capacity top layer - PM300	kg	300
Max. rope storage top layer - winch	m	13
Max. rope storage top layer - PM300	m	120
Lifting speed - winch	m/min	1,2
Lifting speed - PM300	m/min	4
Crank effort at full load - winch	kg	10
Weight Swivel Davit	kg	24
Weight Swivel Davit incl. PM300	kg	29
Weight Swivel Davit incl. winch	kg	35
Weight floor-socket	kg	8,9
Article number - SD501 + winch	no.	77001910
Article number - SD501 + PM300	no.	77001916